



Orchidacea

Newsletter of the
Triangle Orchid Society

Associated with
Sarah P. Duke Gardens

Speaker for September 13, 2010

Walter Off - Classic Cattleyas Reinvented

Walter Off was born into an orchid growing family in 1948 and has been growing them all of his life. He started full time work at Waldor Orchids in the late 1960's and became company president after the death of his father in 1987. Walt was been involved in hybridizing and has several dozen crosses attributed to him. The family tradition now continues and includes his brother, Bill, his daughters, Amy and Robin, his son, David, and son-in-law, Bill.

Walt became an American Orchid Society Judge in 1980 and belongs to the Mid-Atlantic Judging Center in Philadelphia, PA. He served as their judging chairman for six years during the 1990's.

Walt's talk will be entitled "Classic Cattleyas Reinvented". He will discuss what makes a classic Cattleya and what Waldor Orchids has done to preserve their beauty and keep them virus-free for many decades. He will show the different stages of the cloning process and give pointers on Cattleya culture.

Walt will be bringing plants for resale and will feature Classic Cattleya clones. He will also have a nice assortment of other orchids. **Pre-orders are welcome. Check out their photo gallery on the website (www.waldor.com) and give Walt or David a call.**

Walter M. Off, Waldor Orchids

10 E Poplar Ave

Linwood, NJ 08221, 609-927-4126 Office

609-703-9832 Cell, 609-703-9833 David's cell

walt@waldor.com Walt's email

**Walter is bringing
plants to sell**



Fall Auction September 26

Lake Crabtree County Park
**ORCHIDS & ORCHID
WIZ program for
auction**

See page 8 for details

Want long fiber sphagnum?

**See page 8 to join in a bulk
order.**

Dinner with the Speaker

5:30 PM - before the meeting
at the Neo China Restaurant
4015 University Drive,
Durham behind Target's
at the South Square Mall.

Call Robin to reserve a seat, at
919-929-9717

All are welcome

Inside this issue:

<i>This Month's Speaker</i>	1
<i>Minutes of the Last Meeting & Treasurers report</i>	2
<i>Last months speaker Notes.</i>	3-4
<i>Jack Webster Show Table Awards</i>	5
<i>Growing Tips by Courtney T. Hackney</i>	6
<i>Orchid Events, Speaker Dates, TOS Meeting Schedule Volunteer Schedule</i>	7
<i>Map and Directions to Sarah P Duke Gardens</i>	8
<i>Fall Auction Announcement</i>	

**The Triangle
Orchid Society
meets at the
Sarah P. Duke
Gardens,
Durham, NC
The Second
Monday of the
Month
at 7:30 PM**

**www.Triangle
OrchidSociety.org**

TOS Officers and Board Members

President

Robin Gurlitz (919) 929-9717
robing@i-gga.com

Vice President

Program Chairman

Alan Miller (919) 969-1612
orchidacea@att.net

Secretary

David Pickett (919) 688-8410
legaldeacon84@yahoo.com

Treasurer

Melissa Bullard (919) 929-6806
mbullard@email.unc.edu

Past President

Philip Warner (919) 785-0151
pwarner@fminet.com

Board of Trustees:

At Large Trustees: 2010

Bob Davidson (919)-969-7365
bob@cattleya.us

At Large Trustees: 2011

David Devine (919) 828-5332
devinejd@aol.com

At Large Trustees: 2012

Lee Allgood (919) 721-7192
lallgood851@yahoo.com

George Bizub (919) 454-4514
gbizub@nc.rr.com

Jeremy Bueter (336) 301-3798
jbuetter77@yahoo.com

Sally Carpenter (919) 464-5764
scarp919@aol.com

Minutes of the Last Meeting 8/9/2010

The August meeting was called to order at 7:30 pm by the president of the TOS, Robin Gurlitz. Members and guests were welcomed, a number of whom attended Grower's Day. The July minutes and financials were accepted and approved. Raffle tickets were available for \$1 each. Bring a plant for the Show table and receive a free raffle ticket for up to a maximum of 5 tickets. Starting tonight, if you **purchase** 5 raffle tickets, you will receive a 6th one for free.

Grower's Day went extremely well and was well attended due to the efforts of many people. Bob Meyer, who wasn't even able to attend, arranged for publicity in both the N&O and the Durham Herald. John Myhre and David Pickett put up and took down the TOS orchid display and helped wherever else they were needed. Kathy Garrison, Lee Allgood and Melissa Bullard registered attendees. Judith Goldstein arranged for our luncheon and Nancy Harvey assisted and provided wonderful brownies. Marie Crock picked up and delivered the souvenir orchids to the site and she and David Pickett handed them out when the event was over. Alan Miller was our photographer for the event. Two of our members, Paul Virtue and Bob Davidson gave excellent presentations and complimented both Linda Thorne and Linda Wilhelms' talks wonderful orchids were available for purchase from the commercial growers and a number of members brought beautiful orchids to display in the entry way.

Our Fall Auction will be held on Sunday, September 26th at Lake Crabtree County Park in Morrisville. A potluck will start at noon and the auction at 1:00 p.m. Sally Carpenter is chairing the event and she needs volunteers. See Sally during the break to volunteer. Plant donations are always welcome and appreciated, but please check all plants for bugs before donating.

Robin Gurlitz introduced our speaker, Linda Wilhelm, an AOS judge since 1995, whose topic was on The Real Miltonia.

Paul Feaver did an excellent job of discussing the beautiful plants on the Show tables. Time prevented every plant from being discussed. (You may bring to the attention of the presenter a question about a specific plant if that plant has not been discussed.)

The Jack Webster Award Plants were: Greenhouse Grown Awards:

1st Place: Brassavola nodosa, Phil Warner ;
 2nd Place: Cattleya intermedia "Orlata" Paul Welty;

3rd Place: Habenaria erichmichaelii, Nick Plummer.

The Non-Greenhouse Grown Awards:

1st Place: Lockhartia imbricata-- Robin & Josh Gurlitz.

The meeting adjourned around 9:30 pm. Minutes submitted by David Pickett,

Treasurers Report Melissa Bullard

August 2010

INCOME

Plant Raffle.....	\$ 61.00
Membership dues.....	\$ 18.00
<u>Growers Day.....</u>	<u>\$2,125.00</u>
Total Income.....	\$2,204.00

EXPENSES

Refreshments.....	\$ 52.59
Raffle Plant.....	\$ 20.00
Growers Day.....	\$1,202.04
Speaker Exp.....	\$ 323.59
<u>Bank Expense.....</u>	<u>\$ 79.51</u>
Total Expense.....	\$1,717.73
Net Income.....	\$ 486.27

Speaker Notes—Linda Wilhelm

Combined notes from Ana MacDowell & Van Ewert on Linda's "Living Gems" talk and TOS notes for "The Real Miltonias". Linda gave the Little Gems program to the Sandhills society and the Real Miltonias to the Triangle Orchid Society. Thanks go to Ana McDowell and Van Ewert from the Sandhills Orchid Society for the notes on "Living Gems".

Linda Wilhelm, an AOS Judge from Charlotte, NC discussed AOS issues; including the current economy and that many people growing orchids today do not use the AOS facility or site to get information. Members 'simply Google' for any required data. The result is that AOS may have to sell its property and location in Florida. She did indicate that AOS would not sell the property at a loss.

Living Gems:

'Living Gems – Little Jewels for Small Spaces' included reasons that many growers would rather use the limited growing space that they have for smaller plants; rather than use extended space for the larger plants such as Cattleyas – where 3-4 large Cattleyas could fit, you could have 15-20 smaller miniature orchids. Growing under lights is a popular and easy management for the orchid collection under the proper conditions. Linda made the point that there is no specific designation for the term 'miniature' – it is a relative term. We look at miniature plants as being generally smaller than the average orchid – while purists would call 'Pleurothallids' as a true miniature group. So, compact plants would constitute the range of small plants for the limited space grower. Growing can be under fluorescent or LED lighting; and the windowsill with natural light would also qualify. This would make it possible to have a wide range of color and form in a small growing space.

Linda started with Pleurothallids. General culture requires that high humidity, however, not soggy conditions. Linda mentioned that humidity is defined as 'water in the air' not on the plant [via misting]. It is necessary for the roots to 'breathe'. Mention was made of spider mites, and Linda stated that spider mites love *dry* conditions; keeping the conditions humid would reduce the risk of this pest. Using pebble trays with water below the bottom of the pot would assist with mite problems.

When growing under fluorescent bulbs, Linda reminded us that changing these bulbs annually could make quite a difference in the growth of the plants, as the bulbs do become less effective as they age. She also mentioned the use of Formula 409 or Isopropyl Alcohol [70%] as an effective 'pesticide' for 'critters' that might be found present. Use of Formula 409 may require washing it off after a short period.

Bulbophyllums are a staple in the compact collection and grouped together are *Trias ovata*, *Bulbo. ambrosia*, *Cirr. bootanoides* [looking like baby booties], & *Cirr. vaginatum*. Mounting these plants or placing in small pots will depend on how much you prefer to water. In the vandaecous miniatures, *Angraecum dideri*, *Dikia hendersonianum*, *Aerangis citrate*, & *Aerangis luteoalba* var. *rhodosticta* are wonderful favorites –generally needing high light and good humidity. *Tuberolabium kotense* from the Philippines is very fragrant and will do well under the center of the lights or with east sunlight. Some small orchids exhibit 'mat-type' foliage with the flowers appearing on top of the matted leaves. *Epidendrum* [now *Dinema*] *polybulbon* from Cuba is a good example as well as *Dendrobium lichenastrum* and *Neolauchia pullchella* – grown shady and with high humidity. A fine red beauty is *Maxillaria sophronitis* – bright orange-red. All Max types should be grown on an open media. For the small Cattleya alliance, we have the brilliant red *Sophronitis coccinea* [cold & bright], and *Soph. cernua* [warm & bright], and *Soph. brevipedunculata* [also warm & bright]. Linda showed *Soph. Arizona* [*S. brevipedunculata* x *S. coccinea*], a warm growing hybrid of these fine miniatures. She completed the presentation with *Sc. Fire Fighter*; *Sc. Richard Kosel*, & *Sc. Jörg Dietrich Beischer* [a splash-petal]; each of these compact plants being a fitting end to an excellent talk and fun journey through the miniature world of orchids.

The Real Miltonias

The Real Miltonias include over 60 species. The cool ones are Miltonopsis (with their signature water-fall lip) eg: Miltoniopsis phalaenopsis. They need lots of water and a humidity range between 40-60%. Unlike some other orchids Miltonias should never be allowed to dry out completely; they have thin roots. After they bloom cut back on their water supply.

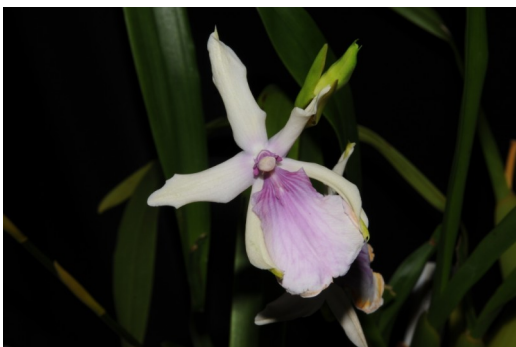
Miltonias are summer and fall bloomers. Most come from Brazil and some are fragrant. They will take high light as long as the leaves are cool. Hybrids usually have a purple lip eg: Miltassia Dark Star (Miltassia Olmec x Miltonia Anne Warne). A good example of the range of conditions is Mtdm. Bartley Schwarz (Beall) composed of species of which 85% take cool temperatures, 85% take intermediate temperatures, 63% take hot temperatures and 17% take cold temperatures. This hybrid may be grown in cool to hot conditions, or 58°F to 85°F at night. To know how to best grow your Miltonia you will need its name. With name in hand you should be able to look it up on a program like Orchid Wiz. This will give you its genetic background .

Repot Miltonias when the roots grow over edge of pot. Soak roots 20-30 minutes in tepid water until soft and pliable. Linda uses a medium to large bark mix with sphagnum and large sponge rock in clay pots. This will keep them from getting soggy. Plastic pots hold moisture longer. Fine bark needs large perlite to open the mix for air or you will need to repot annually. Miltonia roots will rot quickly if the media breaks down. For people who overwater use baskets, tree fern pots, or mount on cork.

For fertilizing the Miltonias Linda uses Michigan State fertilizer 3x per month when the plants are in rapid growth.(Balanced 15-15-15- at ¼ strength). Do not fertilize the orchids when they are dry.

One way to tell bacterial rot spots from fungal infections is that the bacterial infection has a yellow halo and the fungal does not. If the plant has a fungal infection use fungicide. If you have spider mites then the humidity is too low.

At TOS Growers Day Miltonia Hybrids, grown by John Stanton owner of The Orchid Trail, were given away as part of the program,. Here are two examples of these hybrids in bloom:



**Milt. Honolulu Spectacular
X Milt. Ruth Senn**



Milt. Bluntii x Milt. Bluntii 'Admiral'

**Jack Webster Awards
Greenhouse Grown**



2nd Place Ribbon:
C. intermedia "Orlata"
grown by Paul Welty



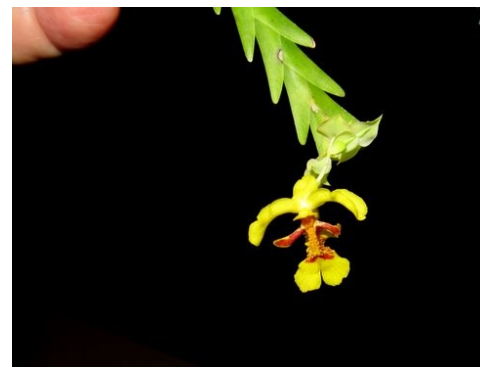
3rd Place Ribbon:
Habenaria erichmichaelii
grown by Nick Plummer



1st Place Ribbon:
Brassavola nodosa
grown by Phil Warner

**Jack Webster Awards
Non-Greenhouse Grown**

*Please bring more non greenhouse
orchids
Our orchid was quite lonely*



1st Place Ribbon:
Lochartia imbricata
Grown by Robin & Josh
Gurlitz

Growing Tips for September

By Courtney T. Hackney EMAIL at Hackneau@comcast.net

Whether you grow on a window sill, under lights or in a greenhouse, the start of fall brings the realization that cold weather is around the corner. Will all of those fantastic acquisitions you got last spring and summer fit into your growing space once cold weather arrives?

Like it or not, this is the time to evaluate your orchid collection and decide if there are some orchids that are not living up to your expectations. That does not always mean that they are poor orchids. Every hobbyist has growing conditions and culture habits that favor some orchids, but not others. If you have an orchid that does not grow for you, consider it a space-making candidate. If it is a clone or a plant that has nice flowers, find a good home for it. It is not hard to find a new hobbyist that will be excited to get it. Often, the same orchid that would not grow for you will thrive for someone else.

There are also some orchids that are prone to disease and are destined to eventually die, no matter what you do. Save yourself years of grief and toss it. When you do, you will join the company of many an accomplished orchid grower who fill garbage cans with orchids that did not live up to expectations. Some of these throw-away orchids are genetically inferior, while others had the bad fortune of contracting a disease at some time in their life and could just not grow out of it.

My own collection is definitely filling every inch of growing space. Many seedlings moved up into larger pots this year. Some of my favorite clones were divided this summer and I always keep an extra piece of my favorites. Eventually, these will find a good home, but it is always a good idea to hold on to a division of your favorites for a year or two after the plant is divided just in case one division does not thrive after repotting.

The hardest orchids to part with are those that grow extremely well, but just do not produce high quality flowers. An orchid that grows well and flowers every year is a keeper. When all of your orchids grow like weeds, consider keeping those orchids that both grow well and produce high quality flowers.

Be sure that your definition of a good bloom is not being influenced by judging standards. If you like an orchid or enjoy its fragrance regardless of its status in the judging arena, keep it.

One of the great aspects of local orchid clubs is that one can see all kinds of orchid species and hybrids. It is the great diversity found among orchids that keep orchid hobbyists' attention year after year. It is not necessary, however, to possess all of them, which is easier said than done. If you find something you really like, discuss its culture with the owner and decide if this is something that you can grow under your conditions.

Most clubs have nice libraries with books on just about every type of orchid and hybrid. Find out everything you can about an orchid that piques your interest. If you take some time before you buy that unusual orchid, there will not be as many orchids to discard in future years. Nothing is more discouraging than having a window sill full of orchids that will just not grow and flower under your conditions.

Announcements & Upcoming Orchid Events

TOS at the N. C. State Fair

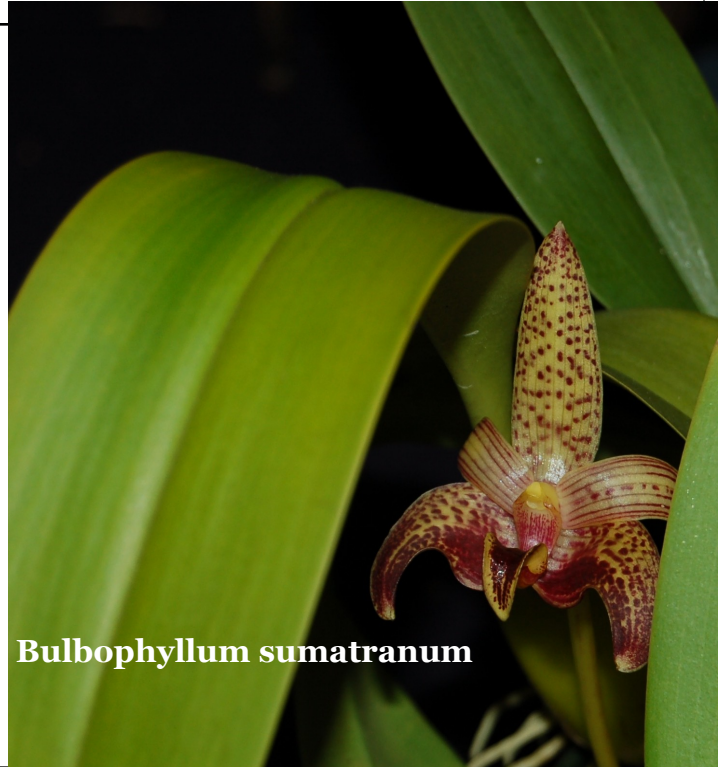
Thurs Oct 14 - Sun Oct 24, 2010

Jeremy Bueter is the chair for our N. C. State Fair exhibit this year. Contact Jeremy for volunteering at this great event and /or for loaning your orchids for the display. Contact: jjbueter77@yahoo.com

This has become one of our most exciting and fun outreach events for our volunteers.

TOS Holiday Party, Dec.13,2010

Begins 1 hour **EARLY** at 6:30 with a member's Potluck dinner.



Bulbophyllum sumatranum

Triangle Orchid Society Meeting Agenda:

7:00-7:30	Set Up Show Table and Chairs
7:30-7:40	Business Meeting Announcements
7:40-8:30	Program
8:30-8:50	Refreshment Break
8:50-9:20	Show Table Review, Show Table Awards
9:20-9:30	Raffle

Calendar 2010	Speaker	Topic
Sept. 13th	Walter Off Plants for Sale	Classic Cattleyas reinvented
Oct 11th	Alan Koch Plants for Sale	Mini Catts
Nov. 8th	Bob Davidson Members plant sale	Everything David feels like telling us about orchids

Welcome Table

Refreshments

September	Lee Allgood	Michael Arner
October	Need Volunteers	Lori Chapman



Associated with

Sarah P Duke Gardens

Interim Newsletter Editor
Robin Gurlitz

Phone: (919) 929-9717
E-mail: robing@i-gga.com

Want to join in on a bulk order of long fiber Chilean sphagnum (@ approx \$45 - \$50/5 kilo bale)? If so, contact Keith Clayton immediately at:
keithclayton@embarqmail.com



TOS FALL AUCTION

**Sun September 26th,
12:00 Noon until finished**

**Lake Crabtree County Park
Beech Pavilion (largest pavilion)
1400 Aviation Parkway
Morrisville, N.C.**

PUBLIC IS WELCOME

Pot Luck Lunch starts at 12:00 Noon

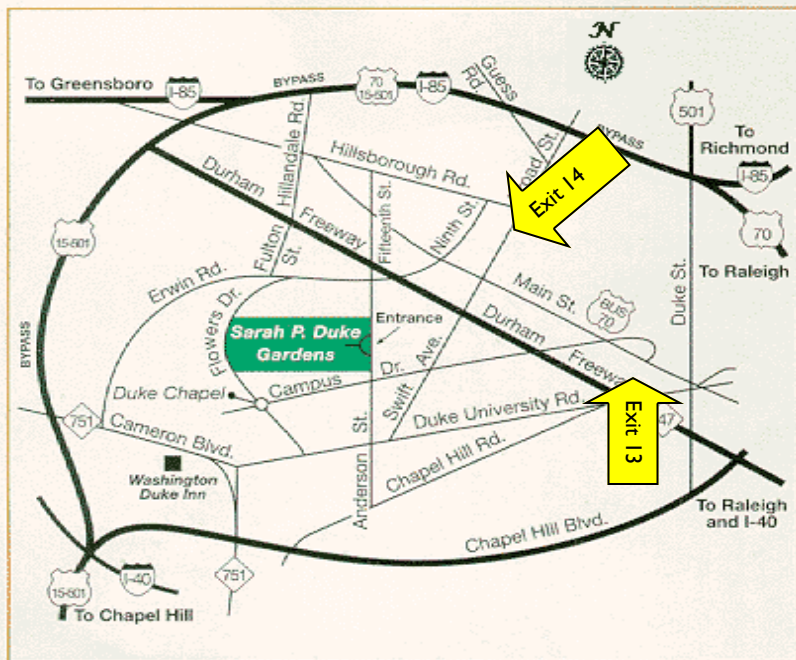
Auction Starts at 1:00 PM

Please bring your favorite covered dish to share

**100's of wonderful orchids, and the newest version of
Orchid Wiz ,for auction**

**All varieties of Orchids for beginners and experts
If you have orchids to donate please e-mail a list to
Sally Carpenter at: scarp919@aol.com**

See accompanying PDF for the announcement of Sandhill's GROWER'S DAY on 10/9/10



**The Triangle Orchid Society
meets at the
Sarah P. Duke Gardens,
Durham, NC
The Second Monday of the Month
at 7:30 PM**

**Visitors are Welcome!
www.TriangleOrchidSociety.org**

From the East. **Exit 13 on the Durham Freeway(#147)**
Head South on Chapel Hill Rd. Turn right on Anderson St.
The Gardens are on the left.
From the West. **Exit 14 on the Durham Freeway (147)**
Head South on Swift Ave. Turn right on Campus Drive ,
Turn right on Anderson St. The Gardens are on the left.

Triangle Orchid Society Dues are:

\$18 per year single, or \$24 per year for two persons living at the same address.

Mail to: Melissa Bullard, Treasurer 510 North Street Chapel Hill, NC 27514