



Dear TOS Members,

Apr 2024 – a month of transformation. The woodlands where I walk my dog each day were completely open with all the broad-leaved trees bare at the beginning of April. Not so today; the tree trunks are now heavily mantled in various shades of green. An impressive transformation in just one month. But the early ephemerals - always wonderful to see flowering in the woods - managed to do their thing before the canopy closed above. So, for those of us with greenhouses this means a time to be rolling out those shade cloths to reduce the intensity of the sunlight falling upon our orchids (I report an interesting related observation later). The shade cloths of course go a long way towards cooling our greenhouses in the height of the summer too.

Business-related Matters from Mar 18 TOS Board Meeting

1. Checking account balance as of 04/13/24: \$9,595
2. Membership Report (Carole Saravitz, TOS Membership Chairperson)

Total Paid Members: 139+22 partners

Previous members: 60+10

April - 3 new members

In Reflection: Apr 8, TOS Monthly Meeting at JCRA

Our charismatic auctioneer, TOS Show Co-Chairperson Ralph Belk, did a splendid job of selling the fine selection of plants purchased from Diamond Orchids in California (Peter T. Lin) and ten paphs from Lehua Orchids in Hawaii (Graham Wood). These 50 plants were bolstered by some generously donated by a few Members to whom the Board extends a big Thank You. All in all, a total profit of **\$873** was raised, which will help support future TOS events this year. Super job Ralph, and Thank You to all the buyers!

In Reflection: Apr 11-14, Western NC Orchid Show, Asheville



Amidst very tough competition, TOS held high its flag and received 3rd place for best display from a visiting society at the Asheville show – it's well known as being a competitively tough show venue. Nonetheless, TOS was there supporting the event, which is what it is all about and many thanks Ralph Belk, Elena Turner, and new TOS Member Claire Stackhausen for making the long journey to put in

the impressive display, and to TOS Board Member Brenda Pauwels for the pick up!



In Reflection: Apr 27, Raulston Blooms at JCRA



A splendid event on a splendid Spring day. Lehua Orchid's slippers (paphs) were all sold out before the clock struck noon. Phew, none turned into a pumpkin! And, TOS happily welcomed several new Members. A big thumbs up to Steve McAllister, Kelly Nipp and Peggy Wesp (l->r in photo), and to Brenda Pauwels for staging the event, and to any other TOS Member involved whom I've missed mentioning!

Upcoming: May 8, Members' Day Trip to Seagrove Orchids

TOS members will be making a midweek excursion to see the Seagrove Orchids greenhouse and its owner Linda Thorne. The plan is to pack a lunch and carpool as much as possible, arriving about 10 AM to enjoy the orchids (of course buying some to bring home too) and eat lunch on the grounds. While in Seagrove, you may want to stop by one of the great pottery shops before returning home.

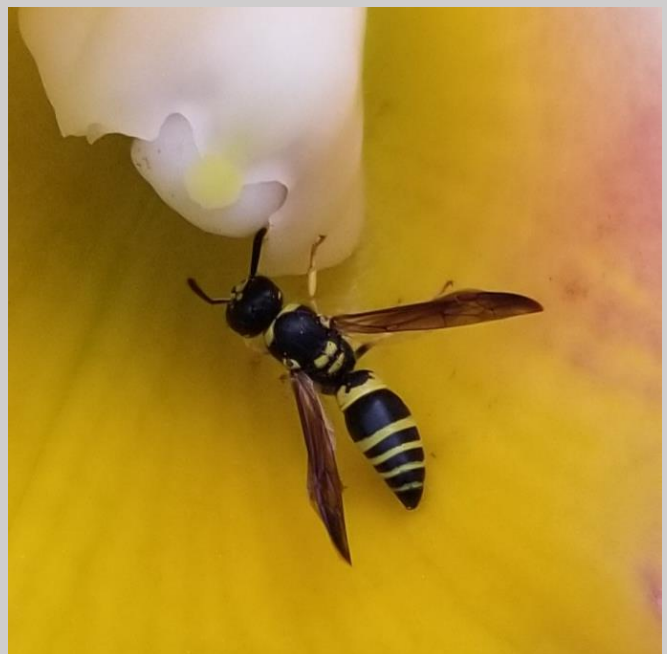
If you are interested, please email our VP, Sunny, at speakers@triangleorchidsociety.org with your name, the city where you live, if you want to carpool, and if you are willing to drive.

Upcoming: May 13 at 7.30 PM, TOS Monthly Meeting at JCRA



TOS Member **Harry Gallis, MD** will present, "Building a Quality Cattleya Collection." Harry, an AOS judge, has been growing and judging cattleyas for decades so he sure knows a thing or two about what makes an award-winning orchid.

The fabulous orchid beside Harry - a little teaser of what he'll be discussing on May 13 - is *Rhyncholaeliocattleya* Malworth 'Orchidglade' FCC/AOS. The inquisitive, six-legged critter with the little 'smiley' on its thorax is a Bramble Mason Wasp



busy checking out the column – it was clearly getting something of a buzz from the subtle fragrance of this orchid flower.

A nice selection of cattleya hybrid seedlings from Sara Gallis of Riverwood Orchids Farm will be available for purchase at the meeting too. So, don't waste time, start building that quality cattleya collection forthwith!

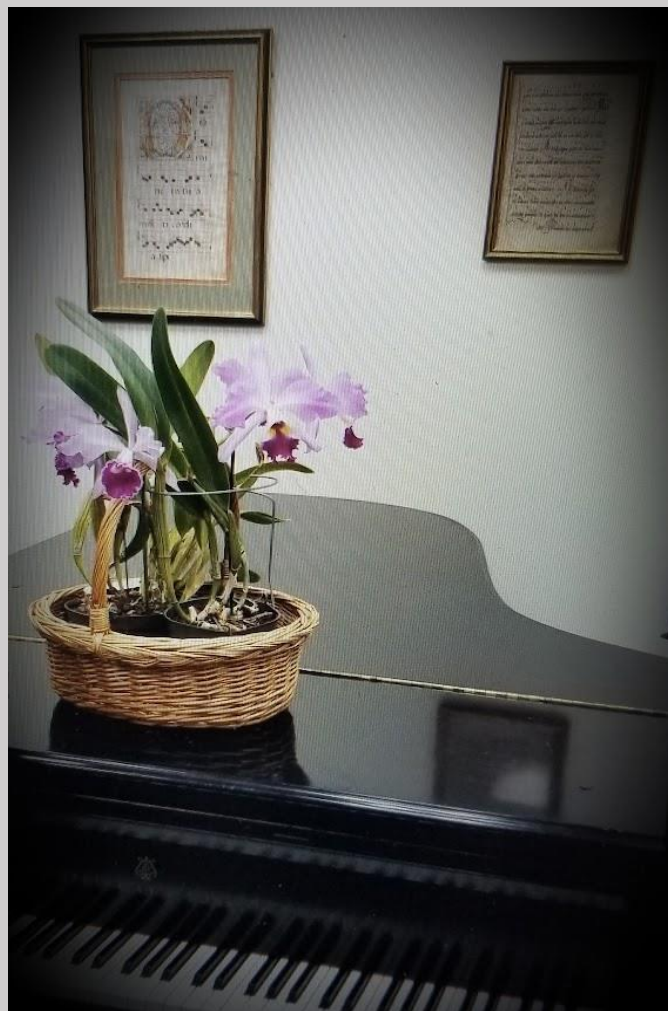
Upcoming: Sat May 18 at 7.30 PM, Clare Liu in Concert with the Orchidaceae

**Where: Nelson Music Room
Duke East Campus
1304 Campus Dr.
Durham, NC 27708**

Admission: Free

A piano recital romantically paired with orchids. Features 13-year-old Clare Liu of Durham Academy. Clare, an exceptional 13-year-old pianist tutored by TOS Member Pei-Fen Liu, will play four pieces from J. S. Bach's Well-Tempered Clavier Book 1 Preludes and Fugues, followed by F. Chopin's complete cycle of 24 Preludes Op 28. Orchid photographs, carefully chosen to fit the mood of each piece, will be simultaneously projected as Clare plays.

It's something completely different and you really don't want to miss it. So, here's my suggestion, which will make Sat May 18 a very special evening for both Clare and you! Take your significant other (and/or invite a neighbor) to grab a bite to eat at one of the great dining places around Durham and then continue along to the Nelson Music Room for



7.30 PM. It will be one of those memorable, enjoyable evenings in your life I promise.

Hosted by TOS Member Pei-Fen Liu, professor of music at Duke University, and the Triangle Orchid Society.

Members' Feature

TOS Board Member **Peggy Wesp** with a fabulous no-name cymbidium specimen. Names are important, especially as we gather more orchids around us, but who wouldn't make



room for this crackerjack no-name orchid in their collection. Cymbidiums of this type can be tricky to grow around here, and indoors too, but Peggy reports that she's owned this flowering beauty for several years. So, if you want to know how to grow and flower specimen cymbidiums, I recommend you bend Peggy's ear. But, don't be surprised if she mentions our Fall for Orchids show in Sept and how she, as a TOS Show Co-Chairperson, relies on eager TOS volunteers to help create this spectacular event, especially those TOS volunteers to whom she divulges cultural secrets! Very well done Peggy, and thanks for sharing.

TOS Members **Robin and Josh Gurlitz** are amongst our expert growers of slipper orchids (many other fine orchids too I may add!) They shared the two photos below of paphs that were recently flowering for them. Left is a delightful primary hybrid called *Paphiopedilum* Ma Belle. The seed parent is *Paph. malipoense* and the pollen parent *Paph. bellatulum*. To the right is *Paph. delenatii* var. Dunkel, a dark-colored variety of *Paph. delenatii*. This particular plant of Robin and Josh's is the offspring of a self-pollination.



The stunning terrestrial orchid to the left I recently photographed in a good friend's woodland garden here in NC. It is a natural hybrid of *Calanthe discolor* x *Calanthe striata* (syn. *sieboldii*), both of which are species native to East Asia, but they – at least the hybrids - obviously grow well here too given the right conditions of a rich woodland soil with some leafy mulch as a winter blanket. Truly wonderful to see a bit of Asian woodland orchid life growing here locally.



And, who do we have here? Our very own TOS Board Member **Tyler Nace** (c photo) with his family visiting a cattleya grower's greenhouses, but that's not just any cattleya grower in the blue sweater, it's Arthur E. Chadwick of the famed Chadwick & Son Orchids nursery in Powhatan, VA. Tyler certainly knows where to buy quality orchids, and I must say, this is an award-winning all-time classic family photo taken with an all-time classic cattleya grower. Well done indeed Tyler! Stay tuned because later this year TOS will be arranging a Members' excursion to visit cattleya aficionado Art and see his jaw-dropping cattleya collection.

Shedding light on an off-color bulbo

The other day while shooting the breeze with a couple of fellow orchid nuts, we came across this textbook example of how the red/purple-colored anthocyanin pigments play a role in protecting plants from light stress. Bulbophyllums have evolved to grow in moderate to relatively high light conditions, but under very high intensity sunlight some will take matters into their own hands to protect themselves. So, with the recent onset of the very bright spring sunlight this healthy specimen of *Bulb. phaelanopsis* (left photo below) was busy producing anthocyanins to intercept and absorb the higher energy irradiation before it reached the sensitive chlorophyll pigments within its chloroplasts. Throughout the low light conditions of winter, the plant was a uniform green color as is evident in the right photo where the image of the leaf directly above had become superimposed on the leaf below because of the photoinduced anthocyanin synthesis. The plant was relocated to a shadier part of the bench where it will readjust its pigment anabolic activities to be more in favor of chlorophyll synthesis.



And, on that colorful note I say goodbye to yet another month. Enjoy the month of May, especially Cinco de Mayo and Memorial Day.....AND DON'T FORGET TO TREAT YOURSELF TO ONE OF THOSE CATTLEYA SEEDLINGS, IT TOO COULD BECOME A FCC/AOS!

Phil Brindle, TOS President

<http://TriangleOrchidSociety.org> <https://www.facebook.com/TriangleOrchidSociety/>